

you can
Canon

CLC1110

superb quality network printer
for graphic arts professionals

*Providing high precision colour
for all your projects*



Keeping pace with your imagination

Canon's new generation CLC1110 network imaging devices break every boundary - for colour, for precision image quality, speed, productivity, reliability and sheer networking power.

Just how professional do you want to be? Canon's latest digital colour solutions extend the boundaries of what can be achieved with an in-house printer.

The CLC1110 is a network imaging solution that can keep pace with your imagination.

You can produce your proofs or short run colour documents with speeds of 8.5 cpm A4 colour and 42 cpm in black and white and with 800 x 400 dpi - 256 half-tone gradations, all of your output will be of the highest quality.

The CLC1110 also has the capacity to handle up to 3,850 sheets with the optional paper deck. There are a host of finishing options available such as stacking, stapling and sorting on the CLC1110; you can even personalise each and every document through variable data printing.

The CLC1110 Canon printers are packed with features delivering a range of real business benefits.



Available with optional paper tray

FEATURES THAT MAKE THE DIFFERENCE

The Canon CLC1110 innovative features improve in house colour reproduction even further, extending the quality and capabilities of print for graphic arts professionals.

TAG BIT – DESIGNED FOR PERFECTIONISTS

The new Canon CLC1110 printer features new Tag Bit – technology that is designed for the perfectionist.

Tag Bit recognises type, key-lines and other solids and prints them at double the resolution of half-tones. That means no ragged edges – just clean, sharp lines.

CREATIVE FREEDOM

Canon's new CLC1110 model give users total creative freedom through the ability to manipulate practically every variable element in the production process.

OVER-SIZE – FULL-BLEED EFFECT UP TO A3

A3 paper measures 297 mm x 420 mm.

The new Canon CLC1110 takes paper up to A3+ size with a printable area of 303 mm x 443.5 mm which means that you can produce full-bleed proofs or posters at A3 after trimming.

The additional printable margin allows you to print cropmarks, margin notes, or even A3+ posters.*

* Ink saturation on the margins outside the A3 area can diminish slightly.

FIERY GRAPHIC ARTS PACKAGE

The optional Fiery Graphic Arts Package (optional with PS-NX650) is a comprehensive suite of specialised design tools which enables graphic art professionals to achieve new standards of colour management and print quality.

Half-tone screening – simulates the final dots that will be imaged on films or plates.

Multiple plate separations – support CMYK plus one or more Pantone colours.

Soft proofing – shows accurate on-screen preview of ripped print jobs.

Auto-trapping – automatically corrects mis-registration.

Paper simulation – allows you to factor in the colour of the stock on which the job will be printed.

TIFF/IT input – allows input of TIFF/IT files to the RIP through a hot folder.

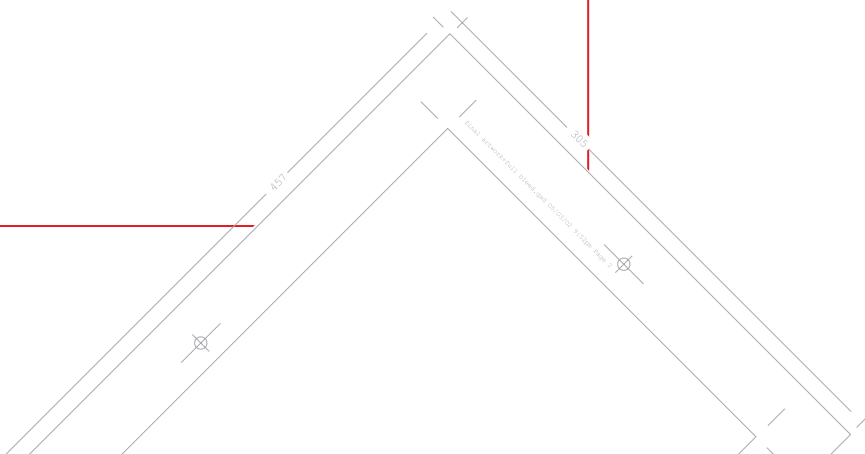
The Spot-On-Colour feature enables you to store named colours in the Controller(PS-NX650) to ensure absolute consistency, for example whenever a company logo is printed.



400 dpi



800 dpi



CANON PS-NX650/PS-NX400W

Combining a Canon CLC1110 printer with the Canon PS-NX650/PS-NX400W extends the scope of network printing further.

It means that anyone on the network has the facility to exploit a huge range of editing and finishing options to create stunning colour documents and A3+ posters, and, of course, print them at high speed. The PS-NX650/PS-NX400W brings effortless control of the production process from previews, editing, printing, sorting and finishing.

Running Fiery Command Workstation™ software, the PS-NX650/PS-NX400W ensures optimum management and manipulation of centralised print jobs from desktop computers, advanced print and colour management and full network compatibility.

Fiery WebTools™

Administer the PS-NX650/PS-NX400W via any Java-enabled browser. View and manage jobs as well as install drivers and utilities remotely.

Fiery ColorWise™

Colour management software for highest quality and accuracy of colour output.

Fiery DocBuilder™Pro™

(optional extra on PS-NX650)

Edit and assemble entire documents before RIPping the files.

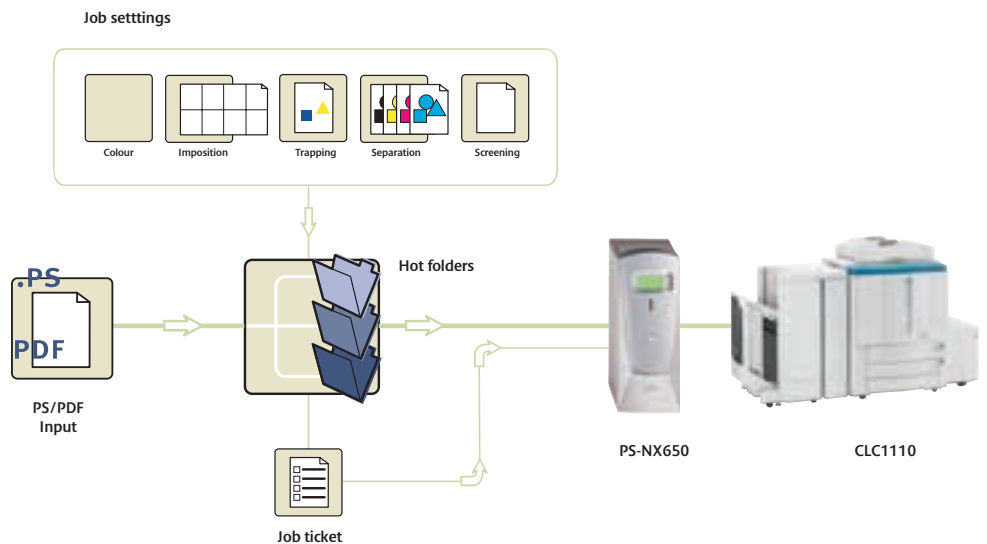
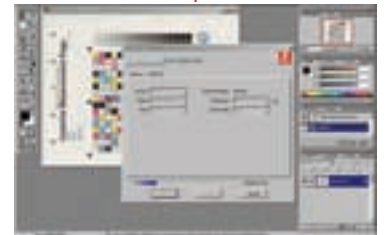
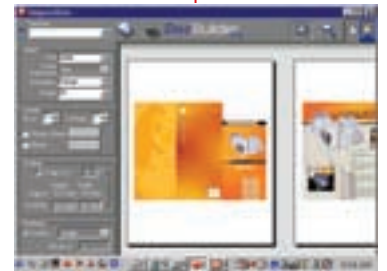
Fiery Remote Scan™ (PS-NX650 only)

Scan remotely and distribute via email or store.

Fiery NetWise™

Ethernet, Token Ring, Web connectivity.

Perform print jobs via email.



Consistent output

QUALITY AND PERFORMANCE

The Canon CLC1110 is designed for quality and performance, resulting in greater productivity, improved document management, seamless networking and assured quality of both colour and black and white output. An impressive combination of hardware and software utilities give graphic arts professionals the speed, ease of use and precision needed for the most challenging print jobs.



CLC1110 Specifications

Copy speed	A4 full colour 8.5 pages per minute, A4 black and white 42 pages per minute
Warm-up time	approx 8.5 minutes
First copy	full colour 19.9 seconds, black & white 11.4 seconds
Resolution	800 dpi equivalent x 400 dpi 256 gradations per colour. Copying colours full colour, mono colour and black. Zoom 25 - 400%
Acceptable originals	sheets, books and three-dimensional objects up to 2kg
Maximum original size	A3 (297 x 420mm)/11x17 (279.4 x 431.8 mm)
Maximum print size	A3 over size, 303.4 mm x 443.5 mm (for crop marks)
Paper weights	64 - 209 gr/m ²
Paper feeding	2 cassettes (550 sheets each), stack by-pass:250 sheets, (optional) side paper deck (2,500 sheets)
Modes and features	area designation mode, marker editing, double sided copying (manual), cover mode, two-page separation, 2 in 1 mode, sharpness, frame erase mode, shift mode, colour creation mode, one touch colour, colour balance, image creation mode, multi-page, enlargement, automatic colour selection, transparency interleaving mode, auto calibration
Options	RDF (Document Feeder), 20-bin stapler sorter, 2,500 sheet paper deck, document tray, editor, control card
Dimensions (W x D x H)	768 x 774 x 1,000 mm
Weight	277.5 kg
Power requirement	230V/50Hz
Power consumption	max.1.5 kW



you can
Canon

Canon Copiers
3 The Forum
Tring Technology Park
Icknield Way
Tring
Hertfordshire HP23 4JX



www.canoncopiers.co.uk
Tel: 08000 822226
Fax: 01442 828811
Email: info@canoncopiers.co.uk

™ All company and/or product names are trademarks and/or registered trademarks of their respective manufacturers in their markets and/or countries. Canon reserves the right to change specifications without notice.