

you can
Canon

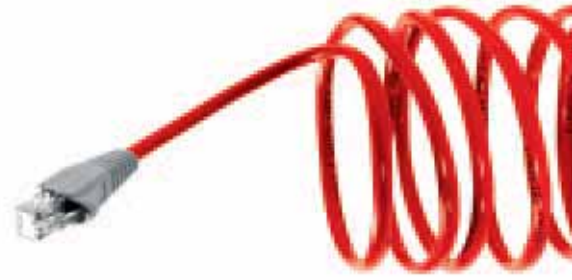
MULTIFUNCTIONAL
DIGITAL SOLUTIONS

iR 1510
iR 1530
iR 1570F

Get through more work
in less time, effortlessly



Optional network printing: adding to overall productivity



Share laser printing resources with everyone on your network and see overall productivity soar. All models in the iR 1500 series can be connected directly to the AXIS 1610 Print Server, providing seamless network printing for all your office computers. Small and simple to install, the AXIS 1610 can be configured and managed using any standard web browser. It allows users to monitor the printer status directly from any connected desktop - and remote monitoring with e-maintenance** is also supported.

With the iR 1500 series, you select the functions that suit your business requirements precisely. Get exactly what you want, without wasting money.



Model	iR1510	iR1530	iR1570F
Printing	✓	✓	✓
Copying	✓	✓	✓
ADF*		✓	✓
Faxing			✓
Network Printing	Optional	Optional	Optional

* Automatic Document Feeder

** Please check availability with your local Canon supplier



Multifunctional solutions to meet both your business and budget demands.

Benefit from increased printing and copying productivity, with Canon's innovative iR 1500 series. True multifunctional versatility means you get more for your money, in less space. It's the ideal way to handle your business needs effortlessly. Complete with a fast faxing and network printing capability*.

BOOSTING OVERALL PRODUCTIVITY

Work turnover in a small office or home office can be far more demanding than within larger organisations. You have to get through more business in less time and with fewer staff. That's where the iR 1500 series delivers. Whatever your workload, network printing, copying and faxing* is right at hand. Always keeping you one step ahead of the competition and allowing you to meet the tightest deadlines without delay.

SUPERIOR PRINT, COPY, FAX QUALITY

You're judged by the quality of your work. While content comes first, presentation is crucially important. Now you can rely on consistently crisp and clear laser printing, copying and faxing for all your communications. The iR 1500 series offers an output quality that matches the performance of far larger machines. Making sure you improve your business image with customers and clients.

CUTTING COSTS AND SAVING SPACE

Why waste money and space on up to three separate machines when one compact unit is all you need. What's more, with the iR 1500 series* all three functions are toner based to provide long lasting performance, eliminating the need to constantly replace costly cartridges. So you save on running costs as well as your investment outlay.

YOU CHOOSE EXACTLY WHAT YOU WANT

The advantage of the iR 1500 series is that you choose the configuration that suits your precise business needs. The iR 1510 offers outstanding printing and copying. The iR 1530 has an Automatic Document Feeder to speed up larger copying workloads. And the iR 1570F has the additional benefit of fast faxing. All three systems offer the added benefit of productive network printing as an invaluable option.

Efficient and affordable printing and copying.

PRODUCTIVITY WITHOUT COMPRISE

However small your business, you can enjoy the productivity of far larger enterprises thanks to true multifunctional efficiency. There's no longer any need to waste time walking to the local copy shop as you get perfect laser printing plus copying - at a fast 15 pages a minute - in one compact unit. A 500 sheet cassette provides continuous paper supply and there's also a 100-sheet stack bypass for printing or copying on a wide range of media. It's the smart solution for all small set ups, saving you space, time and the expense of costly outsourcing or the outlay for additional machines.

EXCEPTIONAL PRINT QUALITY

To make sure that you benefit from the best looking prints, the iR 1500 series has a high print resolution that reaches up to 2400 x 600 dpi (enhanced). A Text/Photo mode automatically distinguishes between photos and text in the document and adjusts the copy contrast for the finest results. But you don't just get improved quality, you also save money. An efficient toner refill system ensures toner is no longer wasted - and a toner saving mode reduces running costs even further.

EASE OF USE AND DIGITAL EFFICIENCY

A clear control panel with a practical message display ensures ease of use for all operations. The iR 1500 series also offers time-saving digital functionality. Multiple-page documents can be scanned just once, to produce up to 99 copies. Electronic sorting then automatically collates multiple sets in page order, without the need for a sorter. Plus you can cut down considerably on your paper costs simply by scanning two originals and copying them on to a single A4 page.

The ideal way to handle larger document loads.

SMOOTH, FAST DOCUMENT FEEDING

Busy offices faced with larger document workloads will find the optional Automatic Document Feeder (ADF) offers the easiest way to increase efficiency. It allows the machine to scan and copy all your multi-page documents automatically, leaving you free to get on with more important work.



Productive Automatic Document Feeder



Clear control panel for ease of use



High capacity 500-sheet paper cassette

Profit from fully-featured faxing.



CUT YOUR COMMUNICATIONS COSTS

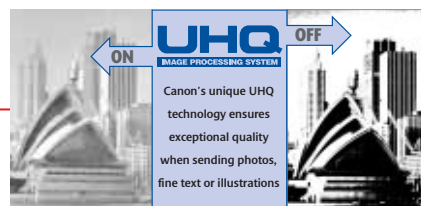
Benefit from complete multifunctional flexibility with the addition of fast, high quality faxing - keeping your business in constant touch with clients worldwide. A Super G3 modem transmits faxes at a fast 3 seconds per page, thus cutting your communication costs considerably. It's the easiest way to add to work productivity, without even taking up any extra space.

FAX DIAGRAMS AND PHOTOS CLEARLY

To ensure total legibility, there's crisp, clean fax printing at a high 600 dpi. What's more, when sending diagrams or photographs combined with text, all details come out clearly thanks to Canon's exclusive UHQ (Ultra High Quality) technology with 64 greyscales. So you can be sure that your business benefits from plain paper faxing at its very best.

SAVE TIME AND EFFORT

You can print urgent work or make copies at the same time as receiving a fax. You also have the benefit of worry free printing, should paper or toner run out, incoming faxes are safely stored in the large 255-page fax memory, for printing out when supplies are replenished. To save even more time, outgoing faxes can be scanned at a fast 17 sheets a minute. There's also one-touch speed dialling for up to 12 numbers and coded dialling for a further 100 numbers.





Specifications iR 1510 / iR 1530 / iR 1570F

MAIN UNIT Type Desktop Copying System Laser Dry Electrostatic Transfer System Platen Fixed Acceptable Originals Sheets, Books and other 3 dimensional objects (up to 2kg) Max. Original Size A4 Copy Size A4 to A5 Copy Speed 15ppm Warm Up Time From Power Off - 4.5 sec. Max From Energy Saver Mode - 1 sec. Max Paper Cassette: 64 - 80 g/m ² Stack Bypass: 56 - 128 g/m ² Cassette 500 sheets cassette: A4 Paper Feeding One cassette and Stack Bypass Paper Capacity Cassette: 500 sheets s (80 g/m ²) Stack Bypass: 100 sheets (80 g/m ²) Memory 16MB Power Supply 230V/50Hz - 60Hz Power Consumption (W) 230V/1.9A Max 890W or less Dimensions (WxDxH) 475x442x327mm (w/o ADF - iR 1510) 475x442x384mm (With ADF - iR 1530 & iR 1570F) Weight (kg) Approx. 21.9 kg (w/o ADF - iR 1510) Approx. 24.0 kg (with ADF - iR 1530 & iR 1570F)	PRINTER SPECIFICATION Print Speed 15 ppm Engine Resolution 600x600dpi Printing Resolution 2400x600dpi (AIR) Smoothing AIR (Automatic Image Refinement) Memory 2MB Printing Method CAPT Network AXIS Network Adapter (TCP/IP, NetBEUI) User Software Windows® 95/98/Me/NT4.0/2000/XP/2003 Server, CAPT Printer Driver, NetSpot Console 3.10®, NetSpot Device Installer 3.02®, Remote Diagnosis Server v1.4SP4®, RDS Agent v2.03
COPIER SPECIFICATION First Copy Time 13 Seconds or less Zoom 50% - 200% (In 1% Increments) Multiple Copies 1 - 99 Sheets Scanning Resolution 600x600dpi Printing Resolution 600x600dpi + RST (1200x600dpi) Paper Size A4, A5 (from Stack Bypass) Original Type Selection Text, Photo and Text & Photo Toner Saver Mode Yes Energy Saver Key Yes Document Feed (ADF) iR 1530 and iR 1570F only Document Processing Speed, 12ipm (A4) Document Capacity, 30 sheets (80 g/m ²)	FAX SPECIFICATION (iR 1570F ONLY) Compatibility Super G3 Compression System MH, MR, MMR, JBIG Modem Speed 33.6Kbps Transmission Speed Less than 3 seconds (Canon Facsimile Standard Chart) Fax Scanning Speed 17 sheets/min (A4) One Touch Speed Dialling 12 Coded Speed Dialling 100 Group Dialling Max. 111 No. of Pages in memory 255 pages (Canon No.1 Chart, STD Mode)
	PC INTERFACE IEEE1284 Yes USB Yes, USB 2.0 Full Speed

™All company and/or product names are trademarks and/or registered trademarks of their respective manufacturers in their markets and/or countries.
Canon reserves the right to change specifications without notice.

you can
Canon

Canon Copiers
 3 The Forum
 Tring Technology Park
 Icknield Way
 Tring
 Hertfordshire HP23 4JX

www.canoncopiers.co.uk
 Tel:08000 822226
 Fax: 01442 828811
 Email: info@canoncopiers.co.uk

