

you can
Canon

iR2200

fully multifunctional digital system

*Select the digital set-up
that suits your exact needs*





***Copy, print, scan, fax ... the choice is yours.
All in a compact, cost-effective system.***

As a small or medium size enterprise, you need equipment that meets your specific needs. Now the new Canon iR2200 digital multi-tasking system provides the ideal solution. Start with the standard copier module ... then configure for printing, scanning and faxing. Adding on each module, as and when you want.

Most important of all, innovative one-chip architecture makes the system truly multifunctional. This means that you can start copying or faxing or scanning while the unit is still printing ... ensuring maximum productivity. Other advantages include a personalised image server and, of course, exceptional digital quality output.

What's more, when the system is seamlessly connected to your existing network, all users benefit from productive operation direct from their desktops - complete with finishing functions. All in a highly compact and extremely cost effective system.





SUPERIOR IMAGE QUALITY

This 22 ppm digital system delivers consistently high quality output for both text and images - equivalent to 1200 x 600 dpi for copying and a high 2400 x 600 dpi for printing, with 256 gradations. Trayless duplexing provides productive two-sided printing. Also speed is combined with savings, as on-demand fixing technology lowers energy consumption.



PRODUCTIVE PRINTING

As a productive multifunctional printer, the iR2200 system greatly improves your office document workflow. Optional PostScript® and PCL emulation ensures faster performance. Plus A3 printing, duplexing and finishing functions are fully supported. With easy, seamless network printing providing complete document management throughout your company.

EFFICIENT, FLEXIBLE FAXING

The iR2200 is ideal for all your heavy-duty faxing needs. The main advantage is that it supports A3 output, duplexing and finishing - with time-saving dual access operation and a high capacity fax directory to speed up operation. Apart from enhanced productivity, it also removes the need for dedicated machines, thus reducing your investment outlay.

MULTI IMAGE SERVER

A unique feature of the system is the ability to store scanned documents and printing files directly on the hard disk. Users can then customise their own 'mailbox' - with the ability to combine, edit and save documents for later re-printing, all direct from their browser. Documents can also be password protected, ensuring complete confidentiality when printing.



COMPACT, DURABLE DESIGN

The innovative design of the iR system, with its built-in finisher and wingless ADF (Automatic Document Feeder) makes it far more compact than competitive machines. It's also highly reliable and durable. A full range of features include a zoom ratio ranging from 25% right up to 800% - as well as comprehensive and convenient editing functions.

EXCEPTIONAL EASE

There's a highly intuitive touch panel for exceptionally easy operation. Alternatively, a remote UI (User Interface) allows users to control operations directly from their PCs, via their web browser. This allows easy monitoring, control and status checks of the system - providing seamless handling of all print jobs throughout your entire computer network.

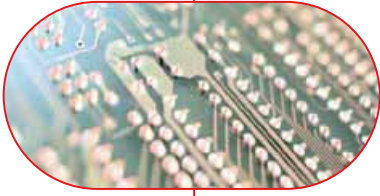
EXTENSIVE PAPER SUPPLY

The system handles all paper formats, from A5R up to A3 - with a total paper capacity of 4,550 sheets to meet even the most exacting demands. Two front-loading cassettes - each holding 500 sheets - and a 50-sheet multi feed are standard. Two more 500-sheet cassettes can be added. Plus there's an optional 2,500-sheet paper deck for heavy-duty workloads.

FULL FINISHING FEATURES

A range of finishing options increase productivity. There's an inner 2-way tray, ensuring that output of copies, prints and faxes are not mixed up. A built-in finisher offers full sorting and stapling functions - without taking up any extra space. Also a Saddle Finisher for professional booklet production - and an optional hole puncher - are available.





- 22 pages per minute output
- Multi-tasking system for copying, printing, scanning and faxing
- Compact, space-saving design
- Time-saving Image Server
- Easy and efficient operation
- High capacity paper supply
- Flexible finishing functions



iR22000 Specifications

Type	Desktop type
Copying system	Laser dry electrostatic transfer system
Platen	Fixed
Acceptable originals	Paper sheet, books and three dimensional objects up to 2 Kg
Maximum original size	A3
Copy sizes	Cassette: A5 to A3, Manual: A6 (Postcard) to A3 Scanning Resolution: 600 x 600 dpi / 256 tones
Printing Resolution	1200 x 600 dpi (Copy), 2400 x 600 dpi (Print)
Zoom	25% - 800% (1% increments)
Speed	22/A4, 16/A3
First copy time	5.8 sec. approx.
Warm-up time	29 sec. or less
Multiple copies	1 - 999
Dimensions (W x D x H)	565 x 678 x 769 mm
Weight (Kg)	80 Kg
Power consumption	1.35kW or less
Fixing system	On demand
Paper	Cassette: 64 to 80 g/m ² , Paper Deck (Drawer): 64 to 80 g/m ² , Hand feeding: 64 to 128 g/m ²
Input Paper capacity	Cassette: 500 sheets x 2, Multi-hand-feeding: 50 sheets, Optional paper deck: 2,500 sheets
ADF	50 sheets / A4
Output Paper Options	Finisher-J1 (300 sheets / A4), Saddle Finisher-G1 (1,000 sheets / A4 + booklet tray), Inner 2 way tray-A1 (600 sheets / A4)
Duplex	Standard
Image memory	128MB RAM + 5.1 GB HDD

Options	<ul style="list-style-type: none"> • Finisher-J1 • Saddle Finisher-G1 • DADF-H1 • Puncher unit-J1/G1/H1 • Inner 2 way tray-A1 • Paper Deck-L1 • Cassette Feeding Unit-W1 • Pedestal • Platen Cover Type E • Card Reader-C1 • Document tray-D2 • Copy Tray-F1 • Network Multi-PDL • Printer Kit-C1 (PostScript3 Emulation/PCL5e, XL) • Network Printer Kit-C2 (PCL5e, XL) • Token Ring™ Network Interface • Adapter iN-TR2 • Fax Board
Printing Feature	
Processor	Canon Custom Processor
RAM	128MB
PDL	PostScript3 Emulation/ PCL 5e, XL
Resolution	600 x 600dpi, 256 tones (2,400 x 600dpi with smoothing)
Printing Speed	22 ppm/A4, 16ppm/A3
Paper Size	Up to A3
Duplex Printing	Yes
PostScript fonts	Roman 136
PCL Fonts	Roman 80 & Barcode 32
Hard Disk	5.1GB
Network Connectivity	Ethernet (10/100BaseT), Token Ring (optional)
Network Protocol	TCP/IP (LPD/LPR/Port9100/ IPP/SMB), IPX/SPX (Pserver/NDS/Rprinter/Nprinter), AppleTalk(PAP)
Supported OS	Windows 95/98/NT4.0/2000/ME, Macintosh
Scanning Feature	
Interface	Ethernet (10/100BaseT)
Resolution	150 to 600dpi, 256 tones
Scanning Area	Up to A3
Driver	Network Twain



you can
Canon



Canon Copiers
3 The Forum
Tring Technology Park
Icknield Way
Tring
Hertfordshire HP23 4JX

www.canoncopiers.co.uk
Tel: 08000 822226
Fax: 01442 828811
Email: info@canoncopiers.co.uk