

you can  
**Canon**

**iR2800**

fully multifunctional digital system

*Stay ahead with an  
advanced digital system*





## *Providing unlimited productivity in an ultra flexible and ultra compact system*

Now Canon brings true multi-tasking document management well within the reach of smaller and medium size companies. The new iR2800 digital system delivers all the advantages of high quality copying, network printing, scanning and faxing ... all within one highly compact, easy-to-use and cost-effective unit.

A modular structure means you select the productive features that meet your workflow demands. Set it up as a digital copier, then add network printing, scanning or heavy-duty faxing to suit your exact needs - immediately or when required. And handle multiple jobs at the same time, thanks to innovative one-chip architecture.

A multi image server enables productive document organisation and storage. With seamless networking allowing users to control operations direct from their desktops, including flexible finishing. Providing superb multi-tasking performance ... at a perfect price.





#### SUPERIOR IMAGE QUALITY

This 28 ppm digital system delivers consistently high quality output for both text and images - equivalent to 1200 x 600 dpi for copying and a high 2400 x 600 dpi for printing, with 256 gradations. Trayless duplexing provides productive two-sided printing. Also speed is combined with savings, as on-demand fixing technology lowers energy consumption.



#### PRODUCTIVE PRINTING

As a productive multifunctional printer, the iR2800 system greatly improves your office document workflow. Optional PostScript® and PCL emulation ensures faster performance. Plus A3 printing, duplexing and finishing functions are fully supported. With easy, seamless network printing providing complete document management throughout your company.

#### EFFICIENT, FLEXIBLE FAXING

The iR2800 is ideal for all your heavy-duty faxing needs. The main advantage is that it supports A3 output, duplexing and finishing - with time-saving dual access operation and a high capacity fax directory to speed up operation. Apart from enhanced productivity, it also removes the need for dedicated machines, thus reducing your investment outlay.

#### MULTI IMAGE SERVER

A unique feature of the system is the ability to store scanned documents and printing files directly on the hard disk. Users can then customise their own 'mailbox' - with the ability to combine, edit and save documents for later re-printing, all direct from their browser. Documents can also be password protected, ensuring complete confidentiality when printing.



### COMPACT, DURABLE DESIGN

The innovative design of the iR system, with its built-in finisher and wingless ADF (Automatic Document Feeder) makes it far more compact than competitive machines. It's also highly reliable and durable. A full range of features include a zoom ratio ranging from 25% right up to 800% - as well as comprehensive and convenient editing functions.

### EXCEPTIONAL EASE

There's a highly intuitive touch panel for exceptionally easy operation. Alternatively, a remote UI (User Interface) allows users to control operations directly from their PCs, via their web browser. This allows easy monitoring, control and status checks of the system - providing seamless handling of all print jobs throughout your entire computer network.

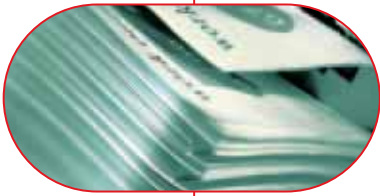
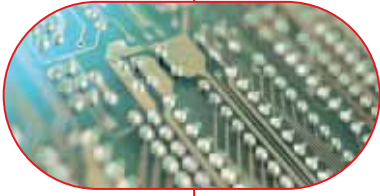
### EXTENSIVE PAPER SUPPLY

The system handles all paper formats, from A5R up to A3 - with a total paper capacity of 4,550 sheets to meet even the most exacting demands. Two front-loading cassettes - each holding 500 sheets - and a 50-sheet multi feed are standard. Two more 500-sheet cassettes can be added. Plus there's an optional 2,500-sheet paper deck for heavy-duty workloads.

### FULL FINISHING FEATURES

A range of finishing options increase productivity. There's an inner 2-way tray, ensuring that output of copies, prints and faxes are not mixed up. A built-in finisher offers full sorting and stapling functions - without taking up any extra space. Also a Saddle Finisher for professional booklet production - and an optional hole puncher - are available.





- 28 pages per minute output
- Multi-tasking system for copying, printing, scanning and faxing
- Compact, space-saving design
- Time-saving Image Server
- Easy and efficient operation
- High capacity paper supply
- Flexible finishing functions



## iR2800 Specifications

<b>Type</b>	Desktop type
<b>Copying system</b>	Laser dry electrostatic transfer system
<b>Platen</b>	Fixed
<b>Acceptable originals</b>	Paper sheet, books and three dimensional objects up to 2 Kg
<b>Maximum original size</b>	A3
<b>Copy sizes</b>	Cassette: A5 to A3, Manual: A6 (Postcard) to A3
<b>Scanning Resolution</b>	600 x 600 dpi / 256 tones
<b>Printing Resolution</b>	1200 x 600 dpi (Copy), 2400 x 600 dpi (Print)
<b>Zoom</b>	25% - 800% (1% increments)
<b>Speed</b>	28/A4, 16/A3
<b>First copy time</b>	5.8 sec. approx.
<b>Warm-up time</b>	29 sec. or less
<b>Multiple copies</b>	1 - 999
<b>Dimensions (W x D x H)</b>	565 x 678 x 769 mm
<b>Weight (Kg)</b>	80 Kg
<b>Power consumption</b>	1.35kW or less
<b>Fixing system</b>	On demand
<b>Paper</b>	Cassette: 64 to 80 g/m <sup>2</sup> , Paper Deck (Drawer): 64 to 80 g/m <sup>2</sup> , Hand feeding: 64 to 128 g/m <sup>2</sup>
<b>Input Paper capacity</b>	Cassette: 500 sheets x 2, Multi-hand-feeding: 50 sheets, Optional paper deck: 2,500 sheets
<b>ADF</b>	50 sheets / A4
<b>Output Paper Options</b>	Finisher-J1 (300 sheets / A4), Saddle Finisher-G1 (1,000 sheets / A4 + booklet tray), Inner 2 way tray-A1 (600 sheets / A4)
<b>Duplex</b>	Standard

<b>Image memory</b>	128MB RAM + 5.1 GB HDD
<b>Options</b>	Finisher-J1 · Saddle Finisher-G1 · DADF-H1 · Puncher unit-J1/G1 · Inner 2 way tray-A1 · Paper Deck-L1 · Cassette Feeding Unit-W1 · Pedestal · Platen Cover Type E · Card Reader-C1 · Document tray-D2 · Copy Tray-F1 · Network Multi-PDL · Printer Kit-C1 (PostScript3 Emulation/PCL5e, XL) · Network Printer Kit-C2 (PCL5e, XL) · Token Ring™ Network Interface · Adapter iN-TR2 · Fax Board
<b>Printing Feature</b>	
<b>Processor</b>	Canon Custom Processor
<b>RAM</b>	128MB
<b>PDL</b>	PostScript3 Emulation/PCL 5e, XL
<b>Resolution</b>	600 x 600dpi, 256 tones (2,400 x 600dpi with smoothing)
<b>Printing Speed</b>	28 ppm/A4, 16ppm/A3
<b>Paper Size</b>	Up to A3
<b>Duplex Printing</b>	Yes
<b>PostScript fonts</b>	Roman 136
<b>PCL Fonts</b>	Roman 80 & Barcode 32
<b>Hard Disk</b>	5.1GB
<b>Network Connectivity</b>	Ethernet (10/100BaseT), Token Ring (optional)
<b>Network Protocol</b>	TCP/IP (LPD/LPR/Port9100/ IPP/SMB), IPX/SPX (Pserver/NDS/Rprinter/Nprinter), AppleTalk(PAP)
<b>Supported OS</b>	Windows 95/98/NT4.0/2000/ME, Macintosh
<b>Scanning Feature</b>	
<b>Interface</b>	Ethernet (10/100BaseT)
<b>Resolution</b>	150 to 600dpi, 256 tones
<b>Scanning Area</b>	Up to A3
<b>Driver</b>	Network Twain



you can  
**Canon**



Canon Copiers  
3 The Forum  
Tring Technology Park  
Icknield Way  
Tring  
Hertfordshire HP23 4JX

www.canoncopiers.co.uk  
Tel: 08000 822226  
Fax: 01442 828811  
Email: info@canoncopiers.co.uk