

complete job management and control of your digital devices

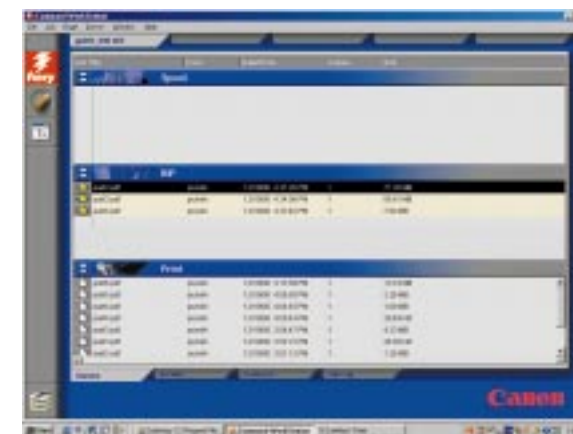
Version 2.0 professional introduces a number of advanced workflow-related features to help improve the way you work. This includes for the first time EFI's powerful Command WorkStation™, which has been expanded into the black and white arena.

Command WorkStation™ software provides complete job management and control for up to five high-end Canon black and white and colour devices all from one centralised location, improving overall document management. The intuitive graphics user interface allows you to preview, merge and edit entire documents, add or delete specific pages, change finishing options and archive jobs.

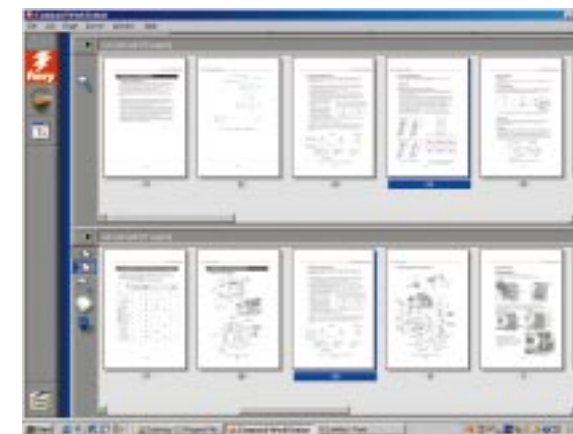
In effect you will be able to easily create new documents by combining word processing, spreadsheet, or graphics files and previewing how those documents will look when finished, all prior to the printing process. In an era of on demand printing, when high speed and low materials waste are critical, these features will provide significant benefits.

Fiery FreeForm™ variable data printing makes customisation affordable and practical by merging permanent master data with an unlimited number of variable graphic and text elements. Combine this with the speed, versatility and reliability of the Canon GP555, 605 and 605P, and you have the ultimate variable data printing solution.

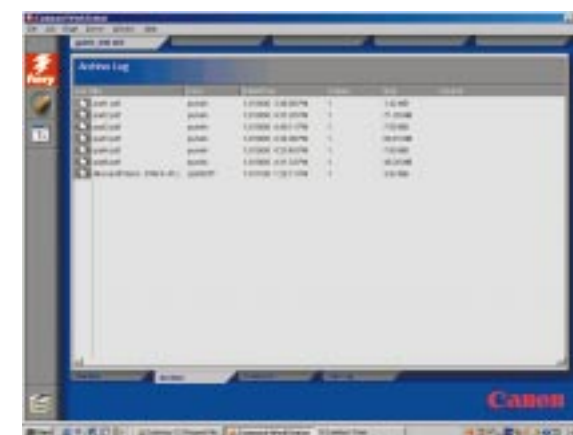
preview, merge
and edit
entire documents



Job progress view



Fiery DocBuilder™



Job archiving

The new v2.0 Professional software for the GP555/605 gives users a powerful set of tools to manage all black & white production printing activity.

Fiery Command WorkStation™

Offers centralised job management.

Fiery DocBuilder™

Job merging and editing allows the merging of pages from one document to another, using thumbnails and full screen modes.

Job Archiving

Manages commonly used print jobs enabling the quick easy reprint of any stored document.

Fiery FreeForm™

A fast in-RIP variable data printing solution, RIP's master (non-variable) data only once, saving time, reducing network traffic and therefore increasing productivity.

Job Log

This view provides detailed information about all the jobs printed to the device, such as the status of the job, user identification, start and end time etc.

Load Balancing

Maximizes resources by enabling users to manually re-route jobs from busy devices to an available device on the network.



Imaging across networks

COMMAND WORKSTATION

PRINT MANAGEMENT SOLUTION

- Document builder
-
- Load balancing
-
- Job archiving
-
- Variable data printing



COMMAND WORKSTATION - OUTPUT MANAGEMENT SOLUTION

Hardware Requirements:

To run the Command WorkStation application, you need:
X6e fiery controller, with at least 64MB of RAM.

High Spec PC:

- Windows-based computer with a 200 MHz Pentium processor
- Windows NT 4.0 with NT Service Pack 5 or later.
- IPX/SPX or TCP/IP networking protocol installed
- PCI VGA interface card
- At least 32MB of RAM
- At least 2MB of Video RAM
- At least 850MB IDE or SCSI hard disk drive
- At least 2x CD-ROM drive
- A 17" Monitor that supports 16-bit colour at a min. resolution of 1024 x 768

The Adobe PostScript printer drivers are capable of providing access to all PS Board features and all support PostScript 3.

Software Specifications:

Command workstation™

- Thumbnail and full screen preview
- Job merging and editing
- Job archiving
- Load balancing
- Fiery FreeForm™ for variable data printing.

Compatibility:

GP555, GP605, GP605P



Imaging across networks



Canon Copiers
3 The Forum
Tring Technology Park
Icknield Way
Tring
Hertfordshire HP23 4JX

www.canoncopiers.co.uk
Tel: 08000 822226
Fax: 01442 828811
Email: info@canoncopiers.co.uk

Canon acknowledges all registered trademarks

CREATED BY CANON TO
GIVE YOU TOTAL PRINT
MANAGEMENT CONTROL